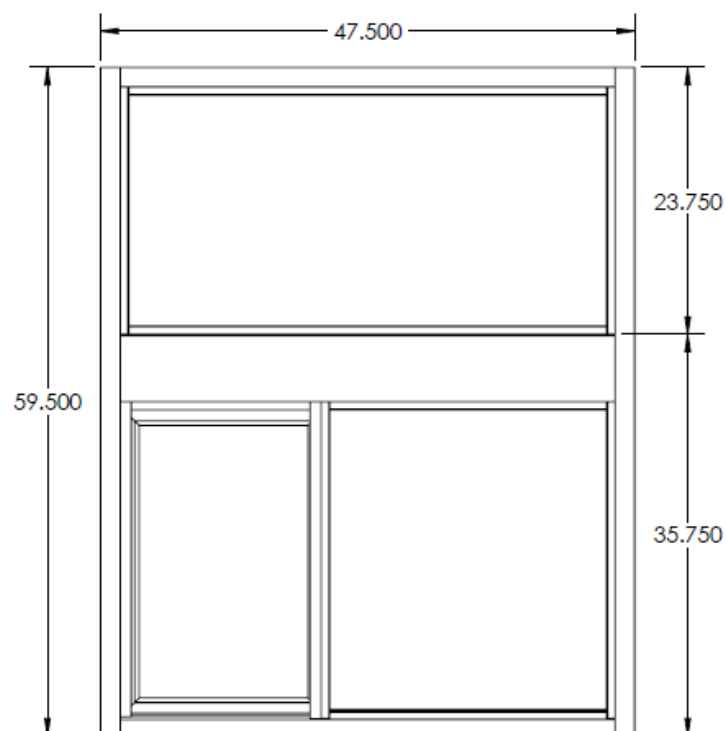
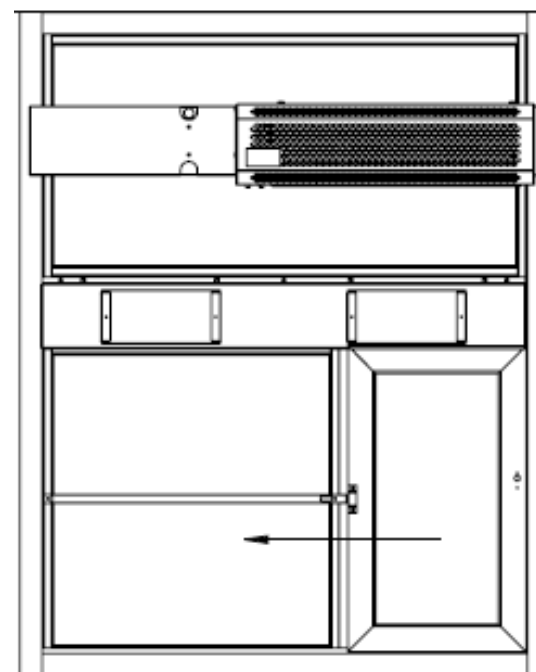


*CALIFORNIA HEALTH CODE COMPLIANT CONFIGURATION  
WITH SOLID GLASS TRANSOM &  
INSIDE MOUNT RAC AIR CURTAIN*



*MODEL 275 WEST COAST W/ SOLID TRANSOM  
L/R DIRECTION FROM OUTSIDE VIEW  
OPERATION: SELF-CLOSE  
1/4" CLEAR TEMPERED GLASS*



*INSIDE VIEW WITH  
RAC AIR CURTAIN  
& MOUNTING KIT*