



West Coast Bi-parting Window for use with inside-mount air curtain

MODEL: WC14x29131

This attractive and economical flushmount window is ideal for a drive-thru or walk up applications. Bi-parting doors slide open to the sides to keep the counter free for staging or hand off.

It is designed specifically to meet California Retail Food Code with a service opening that is under 432 square inches. Use with an inside mount air curtain for an architecturally pleasing look from the exterior.



MODE OF OPERATION

FULLY AUTOMATIC ELECTRIC (131E)

For hands free operation, the operator simply steps into an overhead light beam which opens the door panels automatically. The door panels automatically close when the operator steps away.

SIZE

Window Frame Size: 53.5"W x 35.75"H
Service Opening: 14"W x 29.5"H (under 432 square inches)
Rough Opening: 54"W x 36.25"h

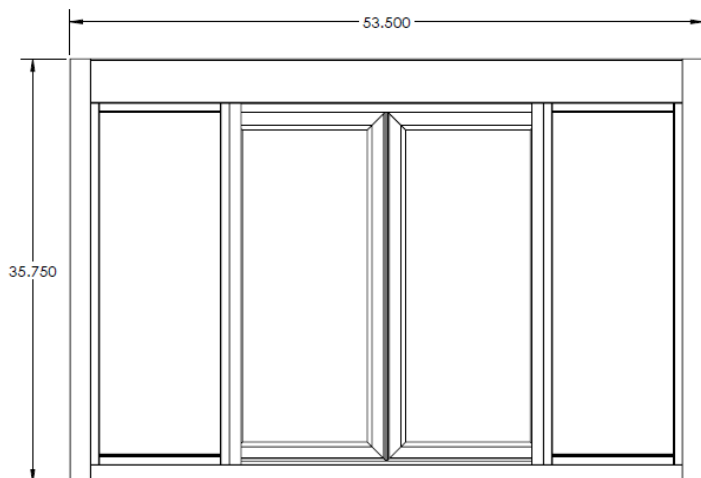
With Solid Glass Transom or AA100 Transom:
Frame size is 53.5"W x 51.5"H
Rough Opening 54"W x 52"H

STANDARD FEATURES:

- ◇ Anodized aluminum extrusions and stainless steel combine to give you an attractive window that will not rust, pit or weather
- ◇ Fully assembled, pre-glazed and ready to install
- ◇ 1/4" Clear Tempered Glass with Low E Hard Coat
- ◇ Dark Bronze or Clear Anodized Aluminum
- ◇ Self latches every time it closes. Also includes a thumb turn lock, and night locking bar
- ◇ Track free bottom sill.
- ◇ One year parts & labor limited warranty
- ◇ On-staff tech support / stocked parts / nationwide network of service providers.

OPTIONAL FEATURES / ACCESSORIES

- ◇ Powder Coat Paint—Tiger Drylac
- ◇ Matching 53.5"W x 10"D SS shelf for interior or exterior use
- ◇ Solid Glass Transom (53.5"W x 51.5"H frame size)
- ◇ Transom and AA100 flyfan with Relay Switch (53.5"W x 51.5"H frame size)
- ◇ In-ceiling (or soffit) mount RCM-20 Unheated Air Curtain and Relay Switch
- ◇ Inside Wall-Mount RAC-E-22 Heated Air Curtain and Relay Switch
- ◇ Inside Wall-Mount RAC-22 Unheated Air Curtain and Relay Switch



Window Frame Size: 53.5"W x 35.75"H

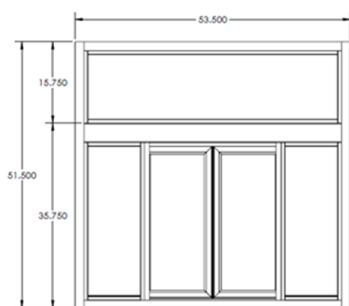
Service Opening under 432 square inches

Rough Opening: 54"W x 36.25"H

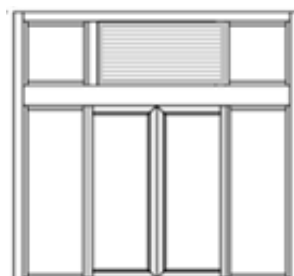
Optional 15.75"H Solid Glass Transom or AA100 Transom

Overall frame size 53.5"W x 51.5"H

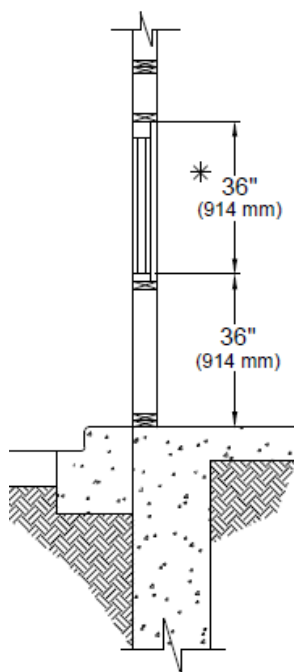
Rough Opening: 54"W x 52"H



Solid Glass Transom



AA100 Air Curtain Transom



All windows ship completely pre-assembled, fully glazed and ready to install.

Installation / Owners manual can be retrieved online:

www.ready-access.com

- ◇ Installation illustrations are for reference only. Construction conditions and local codes prevail.
- ◇ Must be installed level, square and plumb.
- ◇ Recommend approximately 36" from top of sill to interior finished floor (or per local code).
- ◇ Rough opening 1/2" larger than overall frame size recommended to allow 1/4" space all around for leveling.

ELECTRIC REQUIREMENTS FOR WINDOW

Fully Automatic Electric:

Run power to header on right side (from outside view)
Domestic: 115 vac—60Hz with a 15 amp dedicated circuit
Int'l: 220/240 vac - 60 Hz with an 8 amp dedicated circuit

Optional Air Curtain requires separate dedicated circuit

34" -36" minimum distance from top of sill to interior finished floor.

Local codes prevail.