

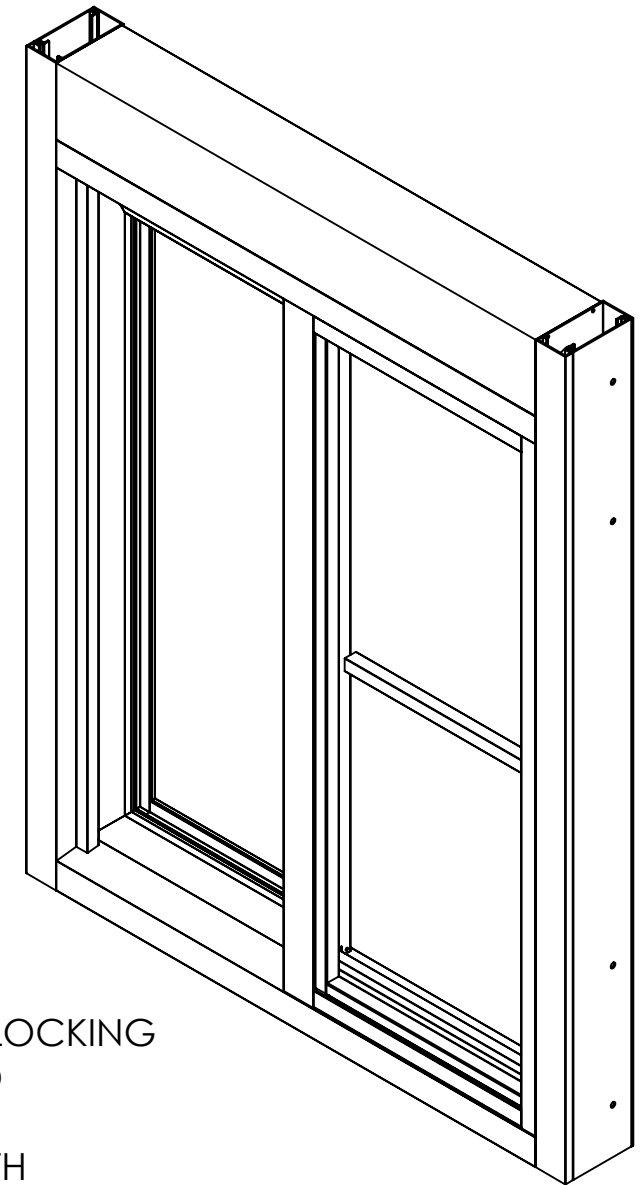
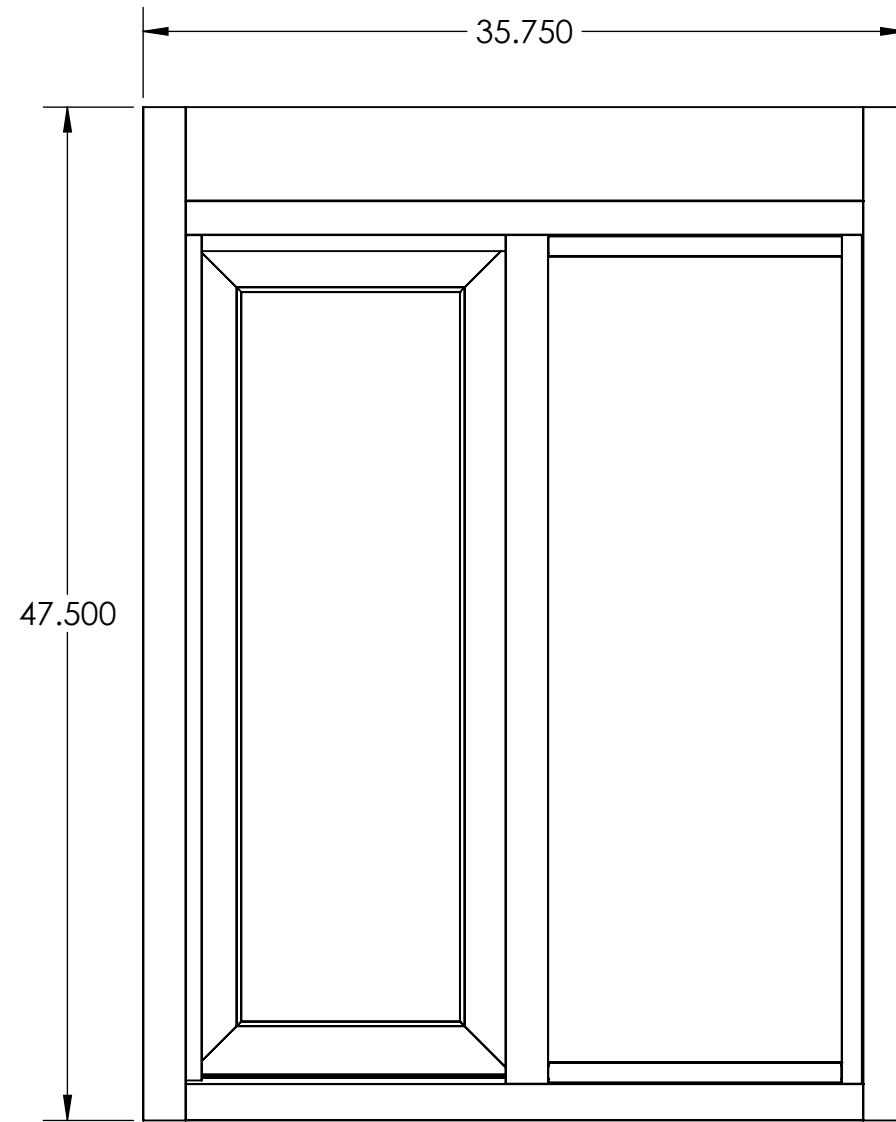
4

3

2

1

CUSTOMER APPROVAL SIGNATURE



VIEW WITH NIGHT TIME LOCKING BAR ENGAGED

4.5" FRAME DEPTH

*MODEL 600*  
*L/R DIRECTION FROM OUTSIDE VIEW*  
*OPERATION: MANUAL OPEN/SELF-CLOSE*  
*3/4" SOLARBAN 70XL INSULATED LOW-E TEMPERED GLASS*  
*FINISH: DARK BRONZE*

B

B

A

A

WORK TO DIMENSIONS- DO NOT SCALE  
 TOL. UNLESS SPECIFIED  
 XXXX TOL. NOT REQD  
 TOL. CLASS ± .063  
 ANGULAR TOL. ± 1°

USED IN PRODUCTS:

DESIGN BY: BCG

MATERIAL: ALUM.

DATE: 11/27/2024

MATERIAL SPEC: 6063-T6

REVISION: A

DRAWN BY: KMS

GAUGE:

REVISION DATE:

DATE: 11/27/2024



1815 Arthur Drive, West Chicago, Illinois 60185. 800-621-5045. 630-876-7766. Fax 630-878-7767

LATEST REVISION NOTE:  
 REV = A RELEASE FOR CUSTOMER APPROVAL

DESCRIPTION: 35.75"W X 47.5"H - FRAME SIZE  
 13.5"W X 39"H - SERVICE OPENING

PART NO.: 60071321

4

3

2

1