



602 Bump Out Window with Security Drawer

Fully assembled window security system with option to serve through window, or lock window and serve through drawer. Includes speaker and option of two drawer sizes to meet your secure transaction needs. The bump out design provides a view of oncoming traffic, architectural interest, and an interior staging shelf.

CHOOSE THE APPROPRIATE GLAZING FOR YOUR SITE:

- ◇ **INSULATED** 3/4" insulated tempered glass.
- ◇ **ENERGY SAVER** Choose 3/4" Solarban 70XL Insulated Low-E glass to maximize energy-efficiency and staff comfort. Estimated to save 33% on energy costs associated with the window. NFRC Rated.
- ◇ **HURRICANE IMPACT** Choose Smash & Grab Impact Rated Glazing (FPA NOA FL5102 – Impact)
- ◇ **SECURITY** Choose Level 1 Bullet Resistant Lexan or Smash & Grab glazing for protection from forced entry. When L1 Lexan is selected, extrusions are lined with L1 Lumiguard.

CHOOSE THE MODE OF WINDOW OPERATION

- ◇ **MANUAL OPEN / SELF CLOSE**
Manual open, with patented hands-free gravity close.
Economical and easy to maintain. Self latches every time it closes.
- ◇ **MANUAL OPEN / ELECTRONIC RELEASE (MOER)**
Electromagnetic "hold open" feature paired with a presence sensor offers the control of manual open with a gravity-fed close that won't release while interacting with customers. Hands free interaction that is easy to maintain.
- ◇ **ELECTRIC**
Fully automatic electric, for hands free open & close, comes with overhead presence sensor.

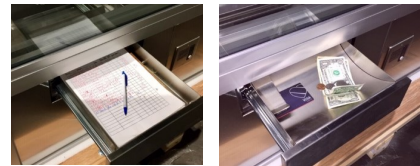
STANDARD FEATURES:

- ◇ Anodized aluminum extrusions and stainless steel combine to give you an attractive window that will not rust, pit or weather
- ◇ Fully assembled, pre-glazed and ready to install
- ◇ Two Drawer Options—transfer area dimensions:
 - Product Drawer: 18.25"W x 14.25"D x 9.5"H
 - Cash Drawer: 9.5"W x 14.25"D x 2.25"H without deal tray
- ◇ Dark Bronze or Clear Anodized Aluminum window frame
- ◇ One year parts & labor limited warranty
- ◇ On-staff tech support / stocked parts / nationwide network of service providers



602 pictured right to left from outside view, clear anodized frame.

Drawer mounted under fixed pane



Cash drawer option with removable deal tray 2.25" high transfer area



Product Drawer option 9.5" high transfer area

OVERALL FRAME SIZE

Includes drawer & speaker housing

- ◇ 47.5"W x 60.5"H x 17"D (19"W x 35"H window service opening)
- ◇ 47.5"W x 52.75"H x 17"D (19"W x 27"H window service opening)

OPTIONAL FEATURES

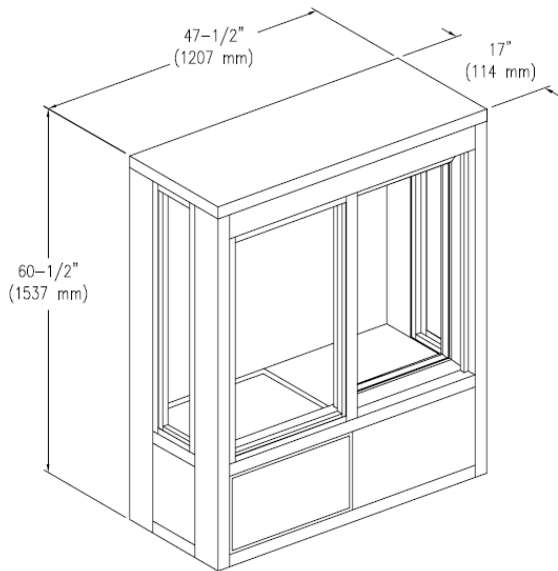
- ◇ Powder Coat Paint—Tiger Drylac
- ◇ Accessories
 - Telescoping Night Time Security Bar Set for additional security
 - Restriction Panel or Screen



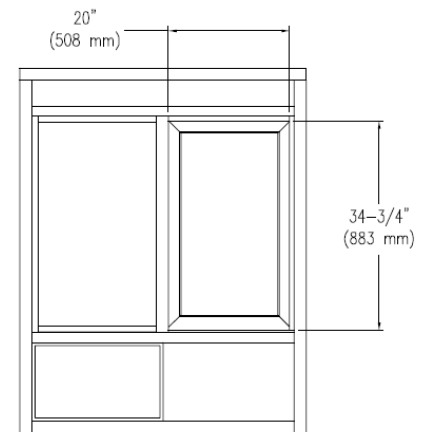
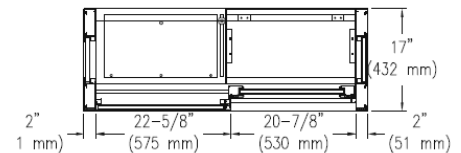
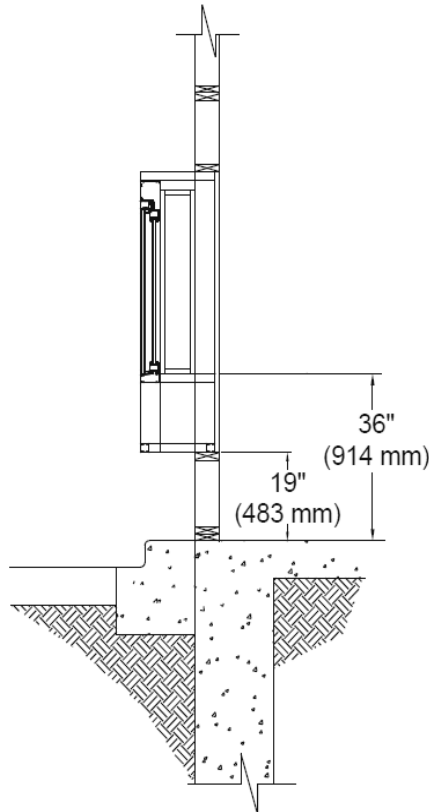
602 Bump Out Window with Security Drawer

ALL WINDOWS ARE SHIPPED COMPLETELY PRE-ASSEMBLED, FULLY GLAZED AND READY TO INSTALL.

Installation / Owners manual can be retrieved online: www.ready-access.com



Must be installed level, square and plumb.



SLIDE DIRECTION

Specify Slide Direction from Exterior View

Left to Right from exterior (= R to L from interior)

Right to Left from exterior (= L to R from interior)

DRAWER POSITION -Specify L or R from outside view

DRAWER TYPE

- ◇ Product: 18.25"W x 14-1/4"D x 9.5"H transfer area
- ◇ Cash: 9.5"W x 14.25"D x 2.25"H transfer area without deal tray

ROUGH OPENING

Rough opening should be 1/2" larger than frame size to allow for shimming.
(defer to preference of glazer if mounting in storefront)

For interior counter sill height of 36", rough opening should be set 18 3/4"H from interior finished floor.

- ◇ 47.5"W x 60.5"H x 17"D (RO 48"W x 61"H)
- ◇ 47.5"W x 52.75"H x 17"D (RO 48"W x 53.25"H)

ELECTRIC REQUIREMENTS—WINDOW

Manual Open / Self Close Operation

No power required

Manual Open / Electronic Release & Fully Automatic Electric:

120v single phase / 60Hz / 15 AMP dedicated circuit

Run to header on fixed panel side

ELECTRIC REQUIREMENTS—SPEAKER

Speaker supplied with 115v cord & plug—positioned opposite drawer.



1815 Arthur Drive West Chicago, IL 60185 800.621.5045 630-876-7766 (fax) 630.876.7767

www.ready-access.com

email: ready@ready-access.com