



## Window Package with (2) Sidelights

For rough opening up to 10' wide

This window package includes a window with attached transom and two sidelights shipped loose to attach in the field through predrilled holes in the side extrusions. It provides extra light, architectural interest, and the flexibility to add an integrated heated or non-heated air curtain as dictated by the regional climate.

### Choose your Glazing

- ◇ **1/4" Clear Tempered** Value choice
- ◇ **3/4" Insulated Low E Tempered (Solarban 70XL)** Maximizes energy-efficiency and staff comfort. Estimated to save 33% on energy costs associated with the window. Provides additional security by featuring two panes of glazing vs one, and a security lip in the frame to help prevent forced entry.

### Choose your Mode of Operation

- ◇ **MANUAL OPEN / SELF CLOSE**  
Manual open, with patented hands-free gravity close. Economical and easy to maintain.
- ◇ **MANUAL OPEN / ELECTRONIC RELEASE (MOER)**  
Electromagnetic "hold open" feature paired with a presence sensor offers the control of manual open with a gravity-fed close that won't release while interacting with customers. Hands free interaction that is easy to maintain.
- ◇ **ELECTRIC**  
Fully automatic electric, for hands free open & close. Operator steps into an overhead beam to activate.



Clear aluminum window with solid glass transom and (2) 18" sidelights for 7'w x 5'h RO

### SIZE

Window Frame Size: 47.5"W x 43.5"H

Service Opening: 19"W x 35" H

Overall Frame Size with transom and sidelights

- 83.5"W x 59.5"H (for 84"W x 60"H rough opening)
- 104"W x 59.5"H (for 104.5"W x 60"H rough opening)
- 119.5"W x 59.5"H (for 120"W x 60"H rough opening)

### STANDARD FEATURES:

- ◇ Anodized aluminum extrusions and stainless steel combine to give you an attractive window that will not rust, pit or weather
- ◇ Fully assembled, pre-glazed and ready to install
- ◇ 1/4" Clear Tempered Glass or Solarban 70XL Insulated Low E
- ◇ Dark Bronze or Clear Anodized Aluminum
- ◇ Self latches every time it closes. Also includes a thumb turn lock, and night locking bar
- ◇ Track free bottom sill provides for a contaminant free surface. Angled toward outside for drainage toward exterior.
- ◇ One year parts & labor limited warranty
- ◇ On-staff tech support / stocked parts / nationwide network of service providers.

### OPTIONAL FEATURES

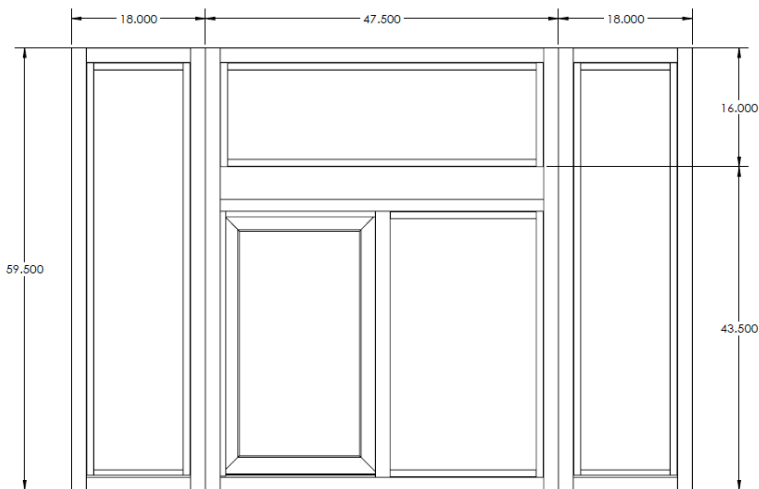
- ◇ Powder Coat Paint—Tiger Drylac
- ◇ Stainless Steel Shelf to mount on interior or exterior (13 ga.)
- ◇ AA300 Heated Air Curtain (replaces transom)
- ◇ Transom for AA100 Fly Fan (includes AA100 / Relay Switch)
- ◇ Transom for AA100 Fly Fan with West Coast Restricted Opening (includes AA100 / Relay Switch)
- ◇ RAC -22 Inside Mount Unheated Air Curtain with mounting kit and relay switch kit for mounting on wall or inside of transom
- ◇ RAC -E-22 Inside Mount Heated Air Curtain with mounting kit and relay switch kit for mounting on wall or inside of transom



# Window Package with (2) Sidelights

For rough opening up to 10' wide

83.5"W x 59.5"H (for 84"W x 60"H rough opening)



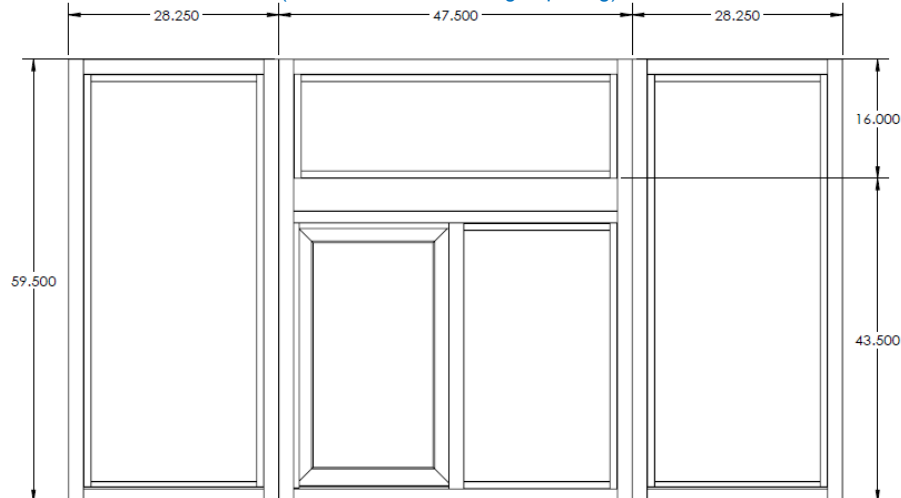
All windows are shipped completely  
pre-assembled, fully glazed and  
ready to install.

Installation / Owners manual can be retrieved online:

[www.ready-access.com](http://www.ready-access.com)

- ◇ Installation illustrations are for reference only.  
Construction conditions and local codes prevail.
- ◇ Must be installed level, square and plumb.
- ◇ Recommend approximately 36" from top of sill to interior  
finished floor (or per local code).

104"W x 59.5"H (for 104.5"W x 60"H rough opening)



## ELECTRIC REQUIREMENTS FOR WINDOW

Run power to header of window on fixed panel side.

**Manual Open / Electronic Release and Fully Automatic Electric:**

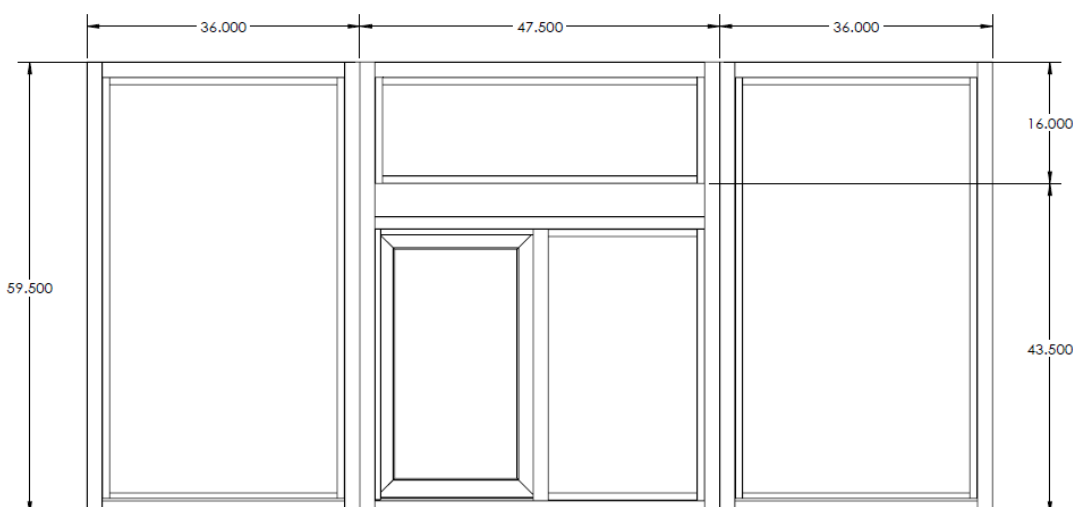
120v single phase / 60Hz / 20 AMP dedicated circuit

**Manual Open / Self Close Window:**

No Power Required

**OPTIONAL AIR CURTAIN ON DEDICATED CIRCUIT**

119.5"W x 59.5"H (for 120"W x 60"H rough opening)



**SERVICE OPENING**—19"W x 35"H

## SLIDE DIRECTION

Specify Slide Direction from Exterior View

Left to Right from Exterior (= R to L from interior)

Right to Left from Exterior (=L to R from interior)

## DEPTH

4"D if 1/4" clear tempered glazing is selected

4.5"D if 3/4" Solarban 70XL glazing is selected



1815 Arthur Drive West Chicago, IL 60185 800.621.5045 630-876-7766 (fax) 630.876.7767

[www.ready-access.com](http://www.ready-access.com)

email: [ready@ready-access.com](mailto:ready@ready-access.com)