



7'x5' Window Package with (1) 36" Sidelight

This window package fits the popular 7'w x 5'h rough opening featured on many architectural plans. This package provides extra light, architectural interest, and the flexibility to add an integrated heated or non-heated air curtain as dictated by the regional climate.

Choose your Glazing

- ◇ **1/4" Clear Tempered** Value choice
- ◇ **3/4" Insulated Low E Tempered (Solarban 70XL)** Maximizes energy-efficiency and staff comfort. Estimated to save 33% on energy costs associated with the window. Provides additional security by featuring two panes of glazing vs one, and a security lip in the frame to help prevent forced entry.

Choose your Mode of Operation

- ◇ **MANUAL OPEN / SELF CLOSE**
Manual open, with patented hands-free gravity close. Economical and easy to maintain.
- ◇ **MANUAL OPEN / ELECTRONIC RELEASE (MOER)**
Electromagnetic "hold open" feature paired with a presence sensor offers the control of manual open with a gravity-fed close that won't release while interacting with customers. Hands free interaction that is easy to maintain.
- ◇ **ELECTRIC**
Fully automatic electric, for hands free open & close. Operator steps into an overhead beam to activate.



SIZE

Window Frame Size: 47 1/2"W x 43 1/2"H

Service Opening: 19"W x 35" H

Overall Frame Size with 16" Transom and (1) 36" sidelight:

83.5" W x 59.5" H

Rough Opening: 84" W x 60" H (7'x 5')

STANDARD FEATURES:

- ◇ Anodized aluminum extrusions and stainless steel combine to give you an attractive window that will not rust, pit or weather
- ◇ Fully assembled, pre-glazed and ready to install
- ◇ 1/4" Clear Tempered Glass or Solarban 70XL Insulated Low E
- ◇ Dark Bronze or Clear Anodized Aluminum
- ◇ Sidelight can be Solid Glass or Two-Part divided at 43.5"h
- ◇ Self latches every time it closes. Also includes a thumb turn lock, and night locking bar
- ◇ Track free bottom sill provides for a contaminant free surface Angled toward outside for drainage toward exterior
- ◇ One year parts & labor limited warranty
- ◇ On-staff tech support / stocked parts / nationwide network of service providers.

OPTIONAL FEATURES

- ◇ Powder Coat Paint—Tiger Drylac
- ◇ Custom Size Window, Transom, or Sidelight(s)
- ◇ Tinted Glazing
- ◇ Low E Glass
- ◇ 5/16 Safety Glass
- ◇ Stainless Steel Shelf to extend sill inside or out (13 ga.)
- ◇ Telescoping Night Time Security Bar Set for additional security
- ◇ AA300 Heated Air Curtain (replaces transom)
- ◇ Transom for AA100 Fly Fan (includes AA100 / Relay Switch)
- ◇ Transom for AA100 Fly Fan with West Coast Restricted Opening (includes AA100 / Relay Switch)
- ◇ Inside Mount Air Curtain (heated or unheated) with optional relay switch



All windows are shipped completely pre-assembled, fully glazed and ready to install.

Installation / Owners manual can be retrieved online: www.ready-access.com

- ◇ Installation illustrations are for reference only. Construction conditions and local codes prevail.
- ◇ Must be installed level, square and plumb.
- ◇ Recommend approximately 36" from top of sill to interior finished floor (or per local code).
- ◇ 84"W x 60" H rough opening recommended for leveling. Sidelight ships loose to attach in field.

36" SIDELIGHT

Two-Part (drawn above) or One-Part Solid Glass available

SERVICE OPENING

Specify L/R or R/L from outside view

DEPTH

4" deep if 1/4" clear tempered glazing is selected

4.5" deep if 3/4" Solarban 70XL glazing is selected

ELECTRIC REQUIREMENTS FOR WINDOW

Run power to header on fixed panel side.

Manual Open / Electronic Release and Fully Automatic Electric:
115 vac—60Hz with a 15 amp dedicated circuit

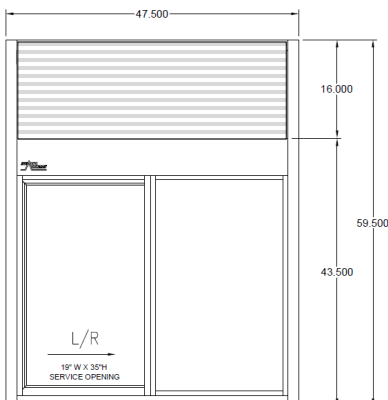
Optional Air Curtain requires separate dedicated circuit

Manual Open / Self Close Window:
No Power Required

VARIATIONS WITH AIR CURTAINS

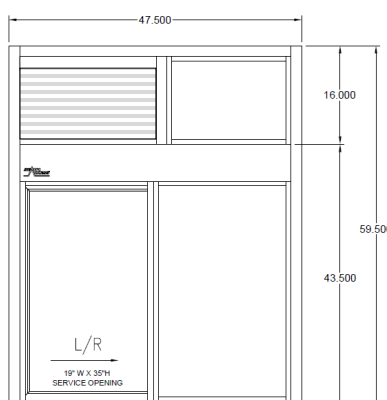
COLD CLIMATES

AA300 HEATED AIR CURTAIN
ILO TRANSOM



WARM CLIMATES

TRANSOM FOR AA100 FLY FAN
STANDARD SERVICE OPENING



WEST COAST

RESTRICTED SERVICE OPENING
TRANSOM FOR AA100 FLY FAN

