

606-54 / 606-72 / 606-80

This attractive insulated flush mount window is available in three standard widths for applications where a large service opening is preferred.

Bi-parting doors slide open to the sides.

MANUAL OPEN / SELF CLOSE OPERATION

Manually open both doors with one hand. Doors part from the center and open simultaneously on smooth overhead rollers. The door panels automatically close and self latch with a gravity feed when the operator lets go.

CHOOSE YOUR GLAZING

- ◇ The 600 series comes standard with 3/4" insulated glass.
- ◇ Choose Solarban 70XL Insulated Low-E glass to maximize energy-efficiency and staff comfort. Estimated to save 33% on energy costs associated with the window. NFRC Rated.



606-80 shown with clear anodized frame - features a large 34" w service opening

SIZE

606-54—Window Frame Size: 53 1/2"W x 37 3/4"H
Service Opening: 22"W x 29"H

606-72—Window Frame Size: 72"W x 41"H
Service Opening: 30"W x 32.5"H

606-80—Window Frame Size: 79 1/2"W x 43 1/2"H
Service Opening: 34"W x 34 3/4"H

Optional Height: Specify from 37 3/4"H to max 55"

STANDARD FEATURES:

- ◇ Anodized aluminum extrusions and stainless steel combine to give you an attractive window that will not rust, pit or weather
- ◇ Fully assembled, pre-glazed and ready to install
- ◇ 3/4" Insulated Tempered Glass
- ◇ Dark Bronze or Clear Anodized Aluminum Frame
- ◇ Autolatch so window cannot be opened from the outside, and thumb turn lock when not in use
- ◇ Track free bottom sill
- ◇ One year parts & labor limited warranty
- ◇ On-staff tech support / stocked parts / nationwide network of service providers

OPTIONAL FEATURES

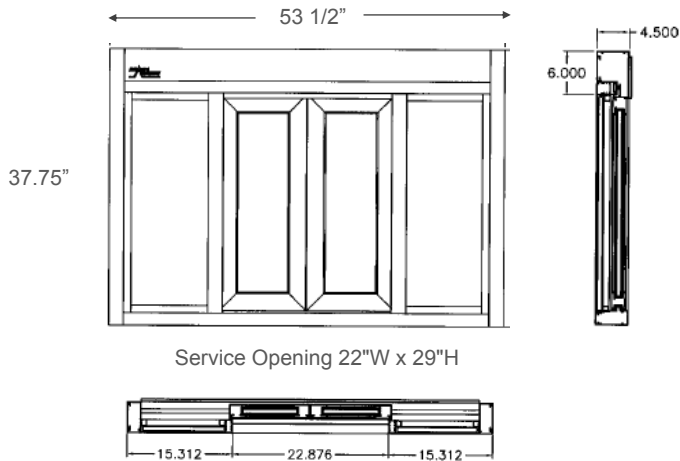
- ◇ Powder Coat Paint—Tiger Drylac
- ◇ Solid Glass Transom
- ◇ Tinted Glazing
- ◇ Solarban 70XL Insulated Low-E Glazing
- ◇ Restriction Panel or Screen

Options for 606-54

- ◇ Fully automatic electric option for hands free open & close
- ◇ Matching 53 1/2"W x 10"D shelf for interior or exterior use
- ◇ Transom to house AA100 flyfan
- ◇ AA300 heated air curtain and side filler kit
- ◇ Telescoping Night Time Security Bar Set for additional security



606—54



All windows ship completely pre-assembled, fully glazed and ready to install.

Installation / Owners manual can be retrieved online:

www.ready-access.com

- ◇ Installation illustrations are for reference only. Construction conditions and local codes prevail.
- ◇ Must be installed level, square and plumb.
- ◇ Recommend approximately 36" from top of sill to interior finished floor (or per local code).
- ◇ Rough opening 1/2" larger than overall frame size recommended to allow 1/4" space all around for leveling.

606-54—Window Frame Size: 53.5"W x 37.75"H

Rough Opening: 54"W x 38.25"H

FRAME DEPTH: 4.5"

606-72—Window Frame Size: 72"W x 41"H

Rough Opening: 72.5"W x 41.5"H

FRAME DEPTH: 4.5"

606-80—Window Frame Size: 79.5"W x 43.75"H

Rough Opening: 80"W x 44.25"H

FRAME DEPTH: 4.5"

ELECTRIC REQUIREMENTS FOR WINDOW

Fully Automatic Electric Option: (606-54 only)

Run power to header on right side
(from outside view)

Domestic: 115 vac—60Hz with a 15
amp dedicated circuit

Int'l: 220/240 vac - 60 Hz with an 8
amp dedicated circuit

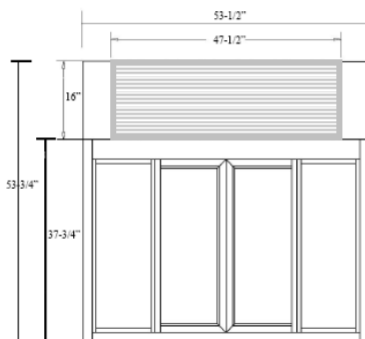
Manual Open/Self Close

No power required

WITH AIR CURTAIN

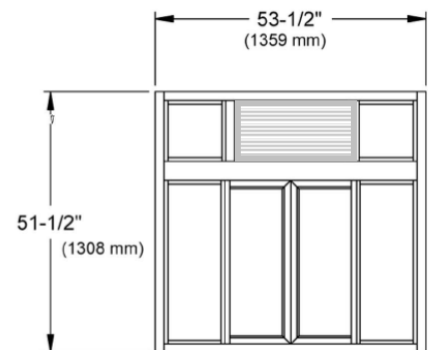
COLD CLIMATES

AA300 HEATED
AIR CURTAIN &
SIDE FILLER KIT
ILO TRANSOM



WARM CLIMATES

ATTACHED TRANSOM FOR
AA100 FLY FAN



1815 Arthur Drive West Chicago, IL 60185 800.621.5045 630-876-7766 (fax) 630.876.7767

www.ready-access.com

email: ready@ready-access.com