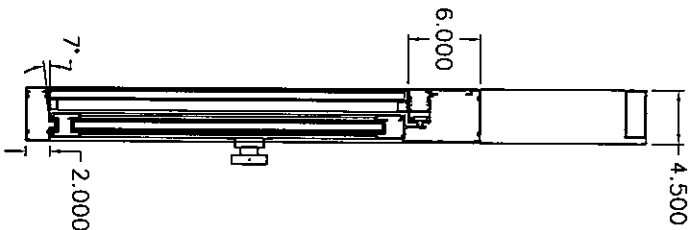
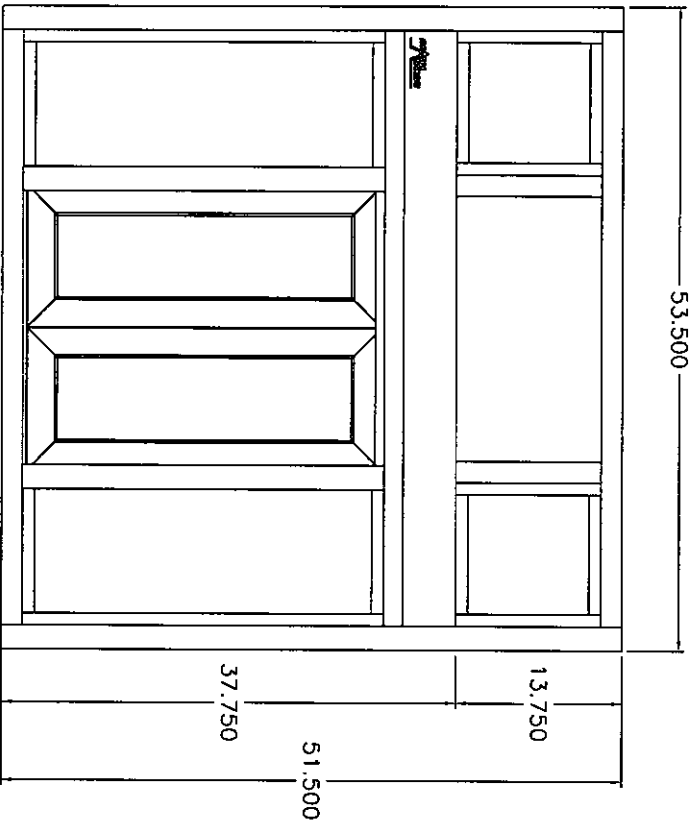
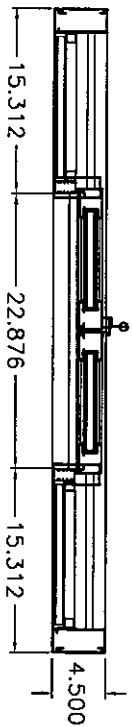


CUSTOMER APPROVAL SIGNATURE



22" W X 29" H
SERVICE OPENING
MODEL 606 WITH TRANSOM OUTSIDE VIEW

WORK TO DIMENSIONS-DO NOT SCALE

TOL. UNLESS SPECIFIED
XXXX TOL. NOT REQ'D
TOL. CLASS ± .063
ANGULAR TOL. ± 1°

USED IN PRODUCTS:

DESIGN BY: MR

MATERIAL: ALUM.

REVISION: A

DATE: 12/21/18

MATERIAL SPEC:

REVISION DATE: 12/21/18

DRAWN BY: MR

6063-T6

LATEST REVISION NOTE:
REV=A RELEASE FOR CUSTOMER APPROVAL

1815 Ardur Drive West Chicago, Illinois 60185 • 800-621-5045 • 630-878-7766 • Fax 630-878-7767



DESCRIPTION:

PART. NO.: