



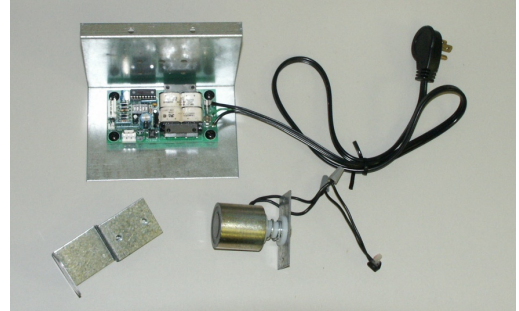
PART # 840007**
SC to M.O.E.R. KIT

INSTALLATION INSTRUCTION

The kits listed below are designed for Ready Access self closing model 275 flush-mount windows.

84000711 Retro Fit Kit - M.O.E.R. "2003" R/L BRZ
84000712 Retro Fit Kit - M.O.E.R. "2003" R/L CLR
84000713 Retro Fit Kit - M.O.E.R. "2003" R/L POW

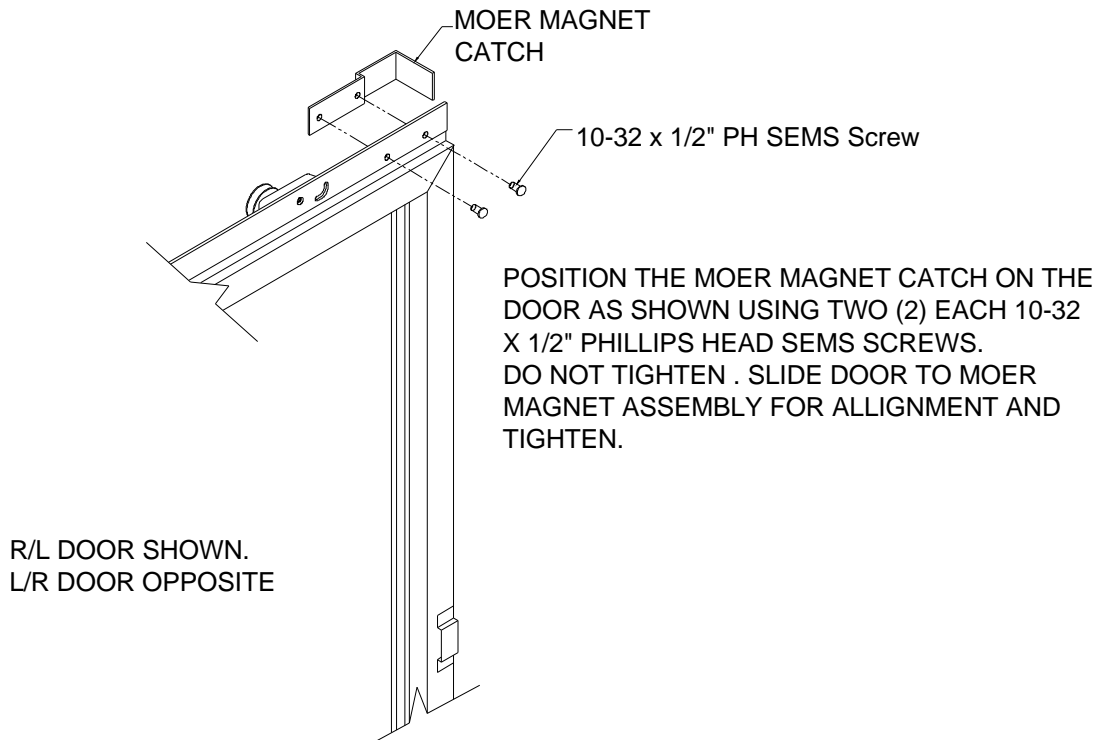
84000721 Retro Fit Kit - M.O.E.R. "2003" L/R BRZ
84000722 Retro Fit Kit - M.O.E.R. "2003" L/R CLR
84000723 Retro Fit Kit - M.O.E.R. "2003" L/R POW



Models Affected - 275R/L SC, 275L/R SC
(R/L SHOWN – L/R IS OPPOSITE)

To install:

1. Remove the header cover from the top of the window.
2. Attach the Magnet Catch Plate to the top of the door. (See Schematic Below)

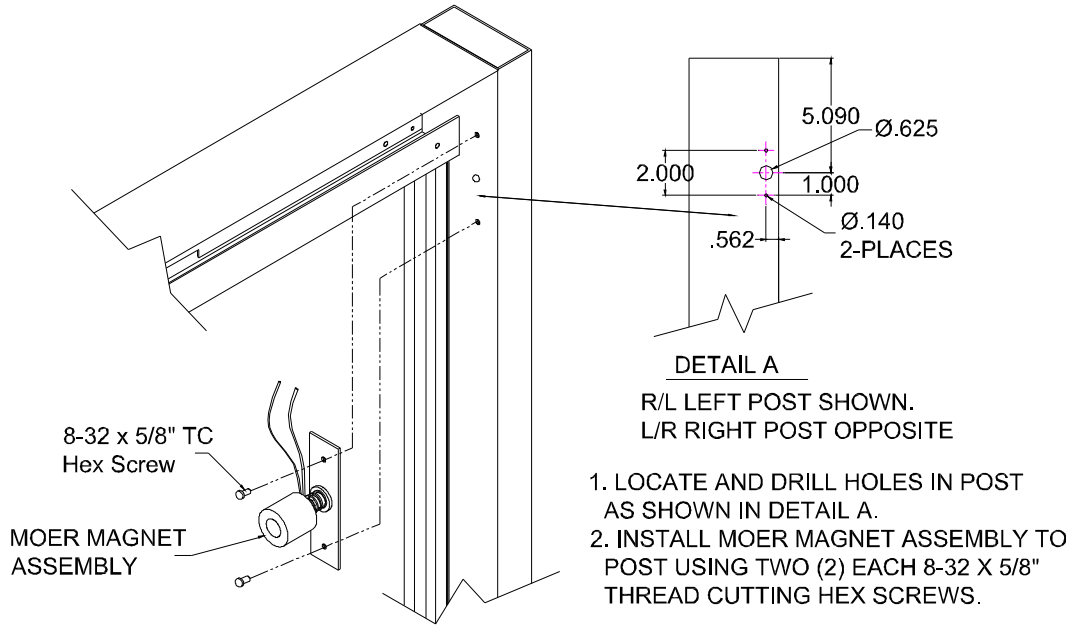


1815 Arthur Drive * West Chicago, IL 60185

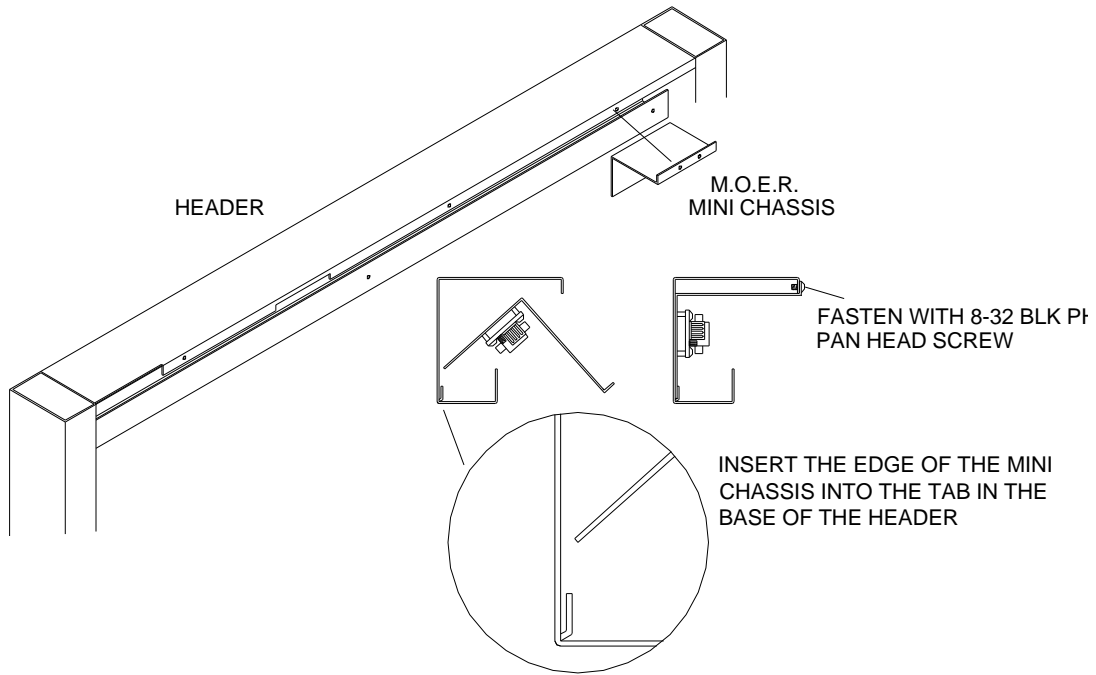
Tel: 630-876-7766, Fax: 630-876-7767 Website - www.ready-access.com

84000711 INSTALLATION.DOC

3. Drill the holes for mounting the magnet assembly. (See Drawing Below)

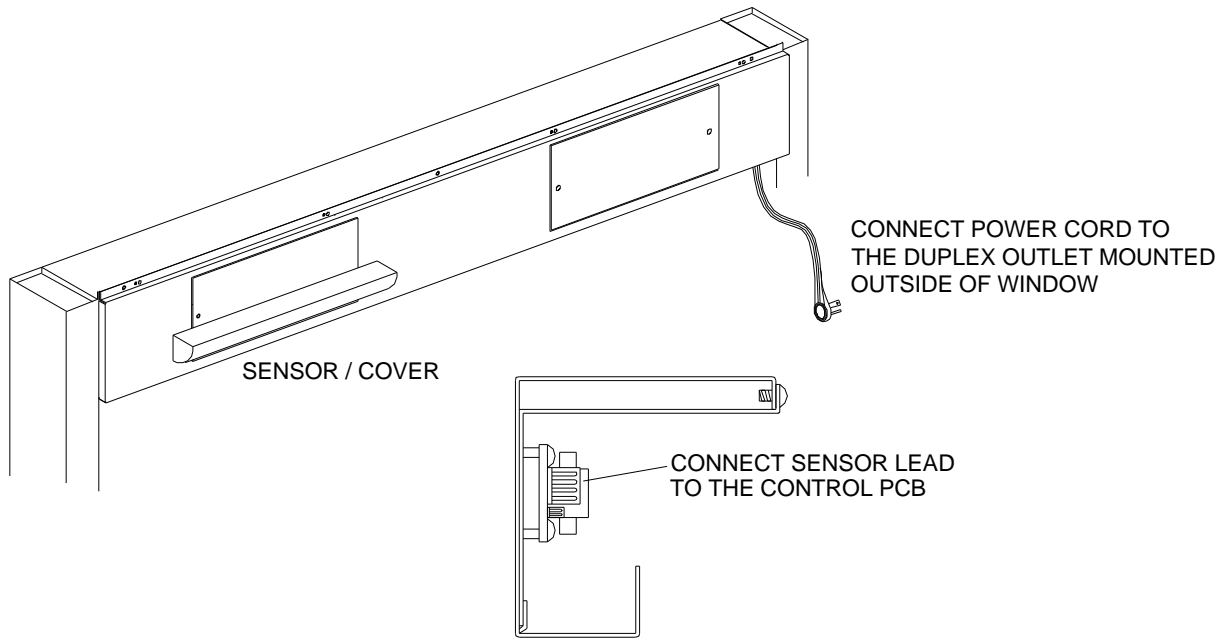


4. Attach the Magnet Assembly as shown above.

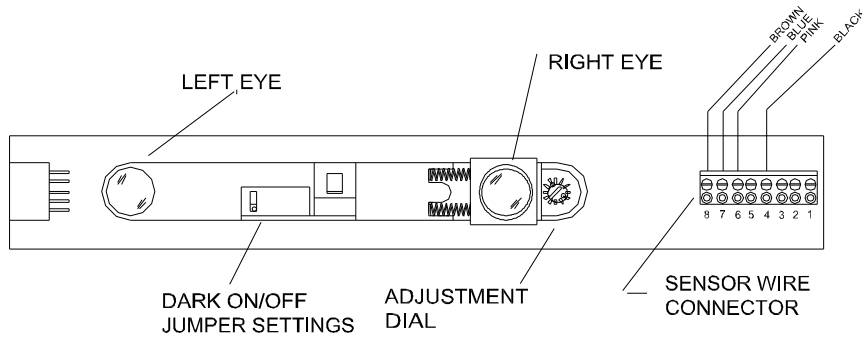


5. Install the M.O.E.R. control (Mini Chassis) as shown above and fasten into place.

6. Connect the sensor lead to the control board and fasten the header cover to the window.

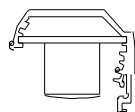


7. Adjust the sensor as described below and check for normal operations.



If the Drive-Thru window stays open while standing far away from the wall or the window closes on you while you are passing product out to the customer, Then the angle of the sensor need to be adjusted.

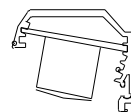
Below are diagrams illustrating the different setting that can be done to adjust the distance from the wall.



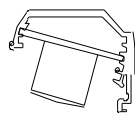
0 DEGREES



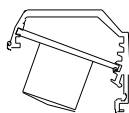
5 DEGREES



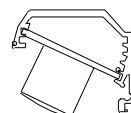
10 DEGREES



15 DEGREES



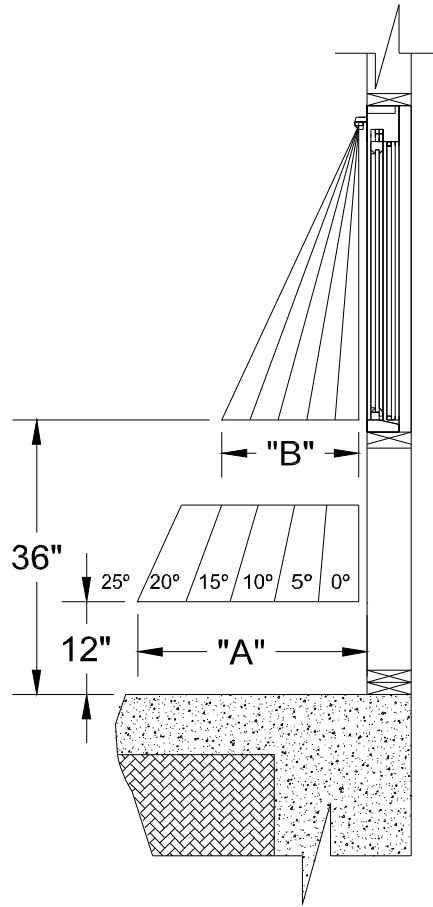
20 DEGREES



25 DEGREES

To adjust the sensor further or closer to the wall, follow the following steps.

1. Remove the header cover from the drive-thru window frame.
2. Disconnect the sensor from the inline connector.
3. Remove the (2) ¼" Hex head screws from the back of the cover that mounts the sensor to the cover.
4. Once the sensor has been removed, remove the eye control board from the sensor body.
5. Position the white plastic clips around the eye control board as illustrated on the previous page. (Reference the chart below to achieve the proper setting that is needed for your application.)
6. Once setting has been determined, insert the eye control board back into the housing.
7. Remount the sensor housing onto the cover.
8. Reconnect the sensor wires.
9. Attach the header cover to the drive-thru window.



RANGE OF SENSOR FROM WALL REFERENCE CHART							
MODEL 275	"A" DIMENSION RANGE WITH 12" DEAD ZONE FROM FLOOR						
UNIT HEIGHT	DEGREE	0°	5°	10°	15°	20°	25°
43-1/2"	"A"	1"	6-1/2"	12"	18"	24"	30-1/2"
35-3/4"		1"	6"	10"	16"	21"	27"
30"		1"	5-1/2"	9"	14"	19"	24"

RANGE OF SENSOR FROM WALL AT THE WINDOW SILL REFERENCE CHART							
MODEL 275	"B" DIMENSION RANGE AT 36" FROM FLOOR						
UNIT HEIGHT	DEGREE	0°	5°	10°	15°	20°	25°
43-1/2"	"B"	1"	4-1/2"	8"	11-1/2"	15"	19-1/2"
35-3/4"		1"	3-1/2"	6"	9-1/2"	12"	15-1/2"
30"		1"	3"	5"	8"	10"	13"