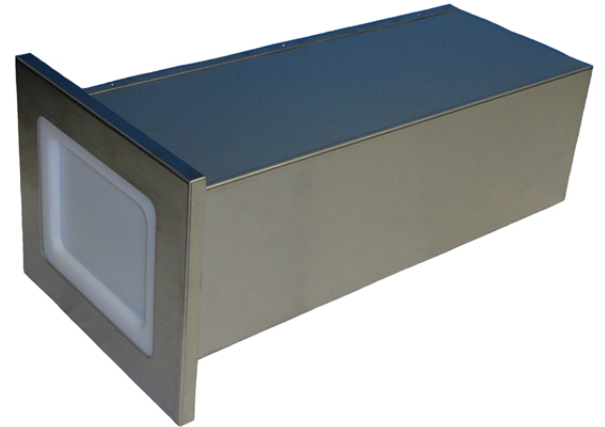
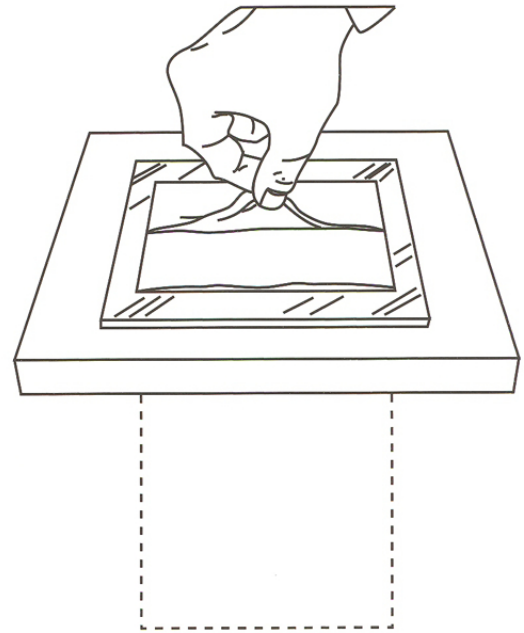


Your top-loading Easy Flow Napkin Dispenser is easily installed on any counter surface. Its hidden storage base conveys a clean, modern appearance, maximizing valuable counter space. Plus, the hidden base means napkins remain flush with the counter for easy customer access. Simply press down on the spring loaded white face panel to add more napkins. It's quick and easy, and there's never a need to remove the storage base.



Product Description:

- Fills easily and quickly without removing existing napkins.
- Stainless steel exterior provides durability and easy cleaning.
- Securely holds napkins up to 17 inches deep or one full sleeve.
- One-year warranty on all parts.
- Reduce waste by allowing one napkin to be removed at a time.
- Cover dimensions 8.75" x 7.375" x .50".
- Barrel dimensions 8.75" x 5.375" x 17.75".
- No. 18 Ga. Stainless Steel, Type 304 No. 4 B Finish.
- Shipping weight 9 lbs.

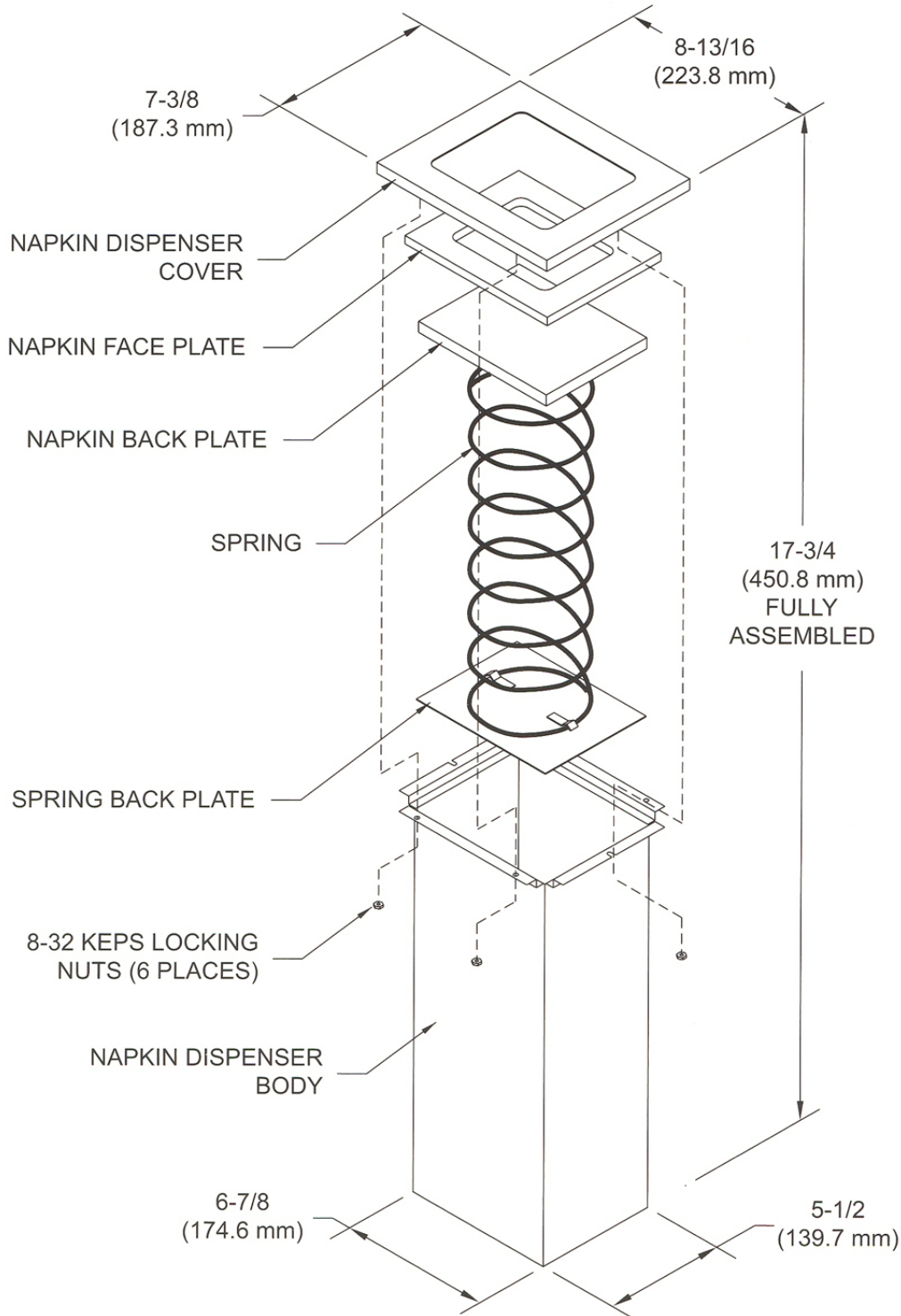


The convenient and easy way to free-up valuable space.

ARRIVES READY FOR INSTALLATION

Your Ready Access window is shipped completely assembled and ready for installation. Comes with instructions.

Easy Flow Napkin Dispenser



Contact Ready Access for more information on installation.