

Flushmount 3, 3T and 3X

Manual Operation

Pass-Thru Window

TABLE OF CONTENTS

Topic	Page
Disclaimer	3
Serial Number Identification	3
Introduction	4
Product Information	
Description	4
Warranty	5
Specifications	6-7
Dimensions	6-7
Installation Procedures	
Tools needed	7
Materials Needed	7
Physical Installation	8
Maintenance	
Maintenance Schedule	11
Daily, Monthly, Yearly	11

DISCLAIMER

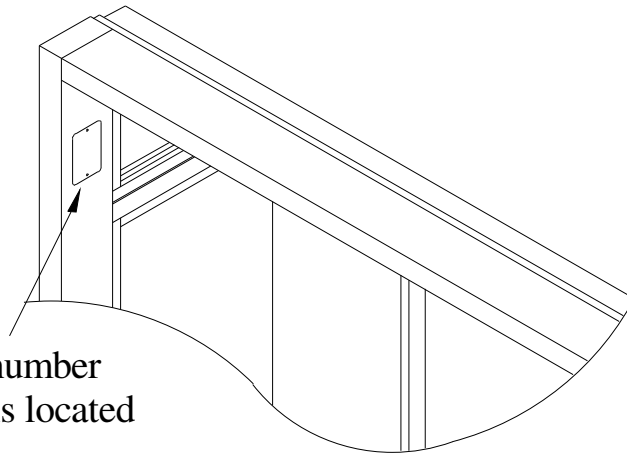
READY ACCESS DISCLAIMS ANY LIABILITY FOR ANY DAMAGE OR HARM CAUSED TO THE FLUSHMOUNT 3 DRIVE-THRU WINDOW, IT'S OPERATOR OR ANY OTHER EQUIPMENT HOWEVER CAUSED IF THE FLUSHMOUNT 3 DRIVE-THRU WINDOW IS REPAIRED OR SERVICED BY ANYONE OTHER THAN AN AUTHORIZED SERVICE ENGINEER OR CONTRARY TO THE MANUFACTURERS WRITTEN INSTRUCTION CONTAINED HEREIN.

THIS MANUAL IS INTENDED FOR USE BY THE IN-HOUSE OR AUTHORIZED FIELD SERVICE ENGINEERS AND SALES REPRESENTATIVES

The manufacturer maintains the right to update, add or issue a new service manual at any time without notice, thereby rendering all previous issues obsolete.

Please write the Serial Number and Installation Date for your drive-thru window in the spaces provided.

SERIAL NUMBER	
Date of Installation	



The serial number nameplate is located on the post

CONTACT INFORMATION

For sales and service contact

Ready Access
1815 Arthur Drive
West Chicago, Illinois 60185
Email: ready@ready-access.com

Tel: 630-876-7766
Tel: 800-621-5045
Fax: 630-876-7767
Website: www.ready-access.com

INTRODUCTION

The Ready Access window is quality designed to give you years of reliable, trouble-free service. Each window is shipped pre-assembled, fully glazed and ready for installation. All Ready Access windows are thoroughly tested prior to shipping.

The Flushmount 3 Series features a large service opening, convenient frame size, simple operation and is ideal for any application. It is a visually appealing window perfect for either walk-up or drive-thru service.

PRODUCT INFORMATION

- **3 Sizes Available**
FM3 – 27-1/4"W x 41"H with a 18"W by 18"H Service Opening. FM3T – 27-1/4"W x 41"H with a 18"W by 33"H Service Opening. FM3X – 27-1/4"W x 26"H with a 18"W by 18"H Service Opening.
- **Manual Operation**
To operate simply push one door and both doors open out. To close simply pull one door handle and both doors close.
- **Quality Construction**
Anodized aluminum extrusions, stainless steel and 1/4" tempered glass combine to give you an attractive window that not only enhances building exteriors, but will not rust, pit or weather. Track free bottom sill provides for a contaminant free surface.
- **Security**
Three separate interior security locks are provided to prevent outside tampering. An optional security bar set is available for high risk locations.
- **Fully Assembled, Ready to Install**
Ready Access windows are shipped completely preassembled and fully glazed for lower installation costs. Normal installation takes less than two hours.
- **Warranty and Service Support**
Your Ready Access window comes with a one year limited warranty on parts and labor provided by a worldwide service organization.

AVAILABLE OPTIONS

- The Flushmount 3 is available in statuary bronze or clear anodized aluminum.
- Powder coat painting is available in a wide range of custom colors.
- Tinted glass is available upon request.
- A stainless steel interior/exterior shelf (28"W x 10"D) is available upon request for employee/customer convenience.
- The Flushmount 3 is available without the overhead transom (FM3X) or with full height doors (FM3T).

WARRANTY:

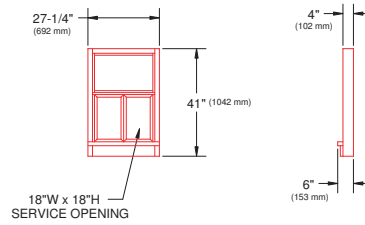
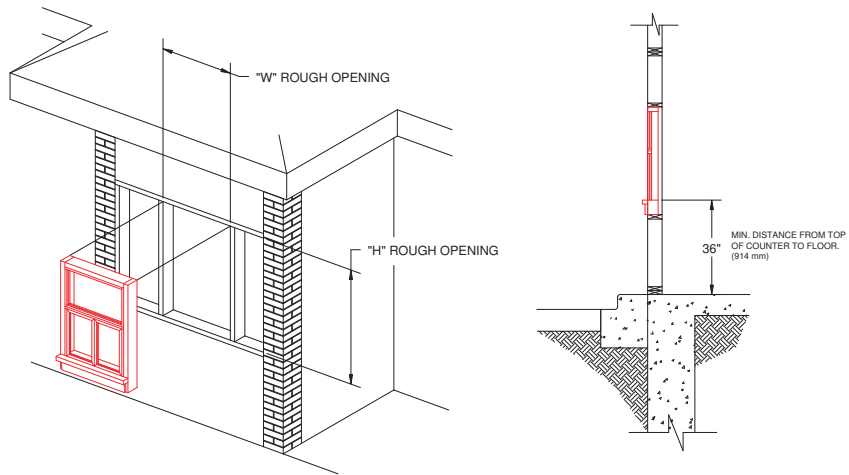
Ready Access will only accept responsibility for manufacturing defects in the product's construction and/or materials.

Adjustments required during installation are the responsibility of the installer or contractor and will not be covered under warranty.

Problems caused by improper installation are the responsibility of the installer or contractor and will not be covered under warranty.

SPECIFICATONS

FLUSH-MOUNT 3 - 3T



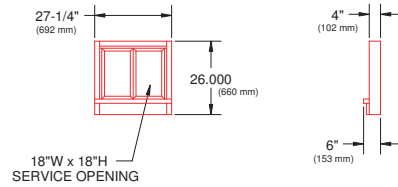
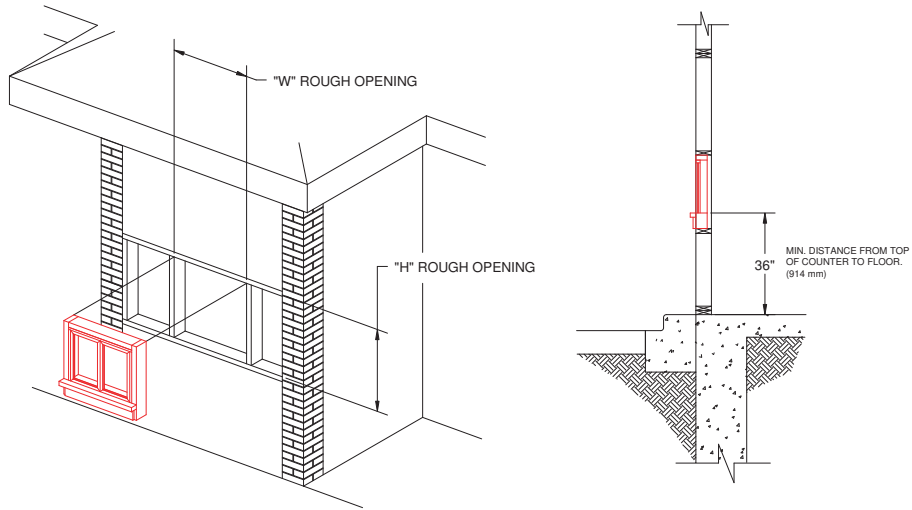
GLAZING ROUGH OPENING = 27-1/2" W (699 mm) x 41-1/4" H (1048 mm)
MASONRY ROUGH OPENING = 27-3/4" W (705 mm) x 41-1/2" H (1054 mm)

INSTALLATION ILLUSTRATIONS ARE FOR REFERENCE ONLY. CONSTRUCTION AND LOCAL CODES WILL DETERMINE PROPER INSTALLATION OF WINDOW.

CONTACT READY ACCESS FOR MORE INFORMATION ON INSTALLATION.

SPECIFICATIONS

FLUSH-MOUNT 3X



GLAZING ROUGH OPENING = 27-1/2" W (699 mm) x 26-1/4" H (667 mm)
MASONRY ROUGH OPENING = 27-3/4" W (705 mm) x 26-1/2" H (673 mm)

INSTALLATION ILLUSTRATIONS ARE FOR REFERENCE ONLY. CONSTRUCTION AND LOCAL CODES WILL DETERMINE PROPER INSTALLATION OF WINDOW.

CONTACT READY ACCESS FOR MORE INFORMATION ON INSTALLATION.

Installation Procedures

Tools required to perform the installation

- **Electric Drill**
- **Metal Drill bits –**
 - 1/8" (3mm)
 - 1/4" (6mm)
 - 1/2" (13mm)
 - 1" (25mm)
- **Screwdrivers – Slotted and Phillips**
- **Hacksaw**
- **Jack / Utility Knife**
- **Flat File – Coarse**
- **Caulking gun**
- **1/4" Nut Driver**
- **Extension Cord**
- **Masonry drill bit –**
 - 1/4" (6mm)
 - 1" (25mm)
 - 1 1/2" (38mm)
- **Masonry Hole Saw – 1" (25mm)**
- **Channel Lock Pliers**
- **Tape Measurer**
- **Wire Cutter**
- **Step Ladder**
- **Level**

Materials required for installation

- Window framing, architect specified and installed in building.
(Ready Access recommended material is 1/4" (3mm) x 1 3/4" (44.5mm) x 4" (102mm) hollow aluminum tubing or glazing channel)
- Electrical Tape
- Wire Nuts
- Caulking – silicone (Color specific to the color of window)
- Connectors for conduit as required
- Shingle type shims – as required to level and plum the window

Installation

1. Check the shipping carton for any visible damage. If the carton contents appear damaged, appropriate shipping claims must be filed.
2. The customer supplied frame must be made to accommodate the dimensions shown on pages 6 & 7.
3. Remove top of carton cover. Mounting hardware is taped to the inside of the window unit. Remove mounting hardware from inside of window and set aside.
4. Remove window from carton and lay on top of carton cover.

Note: Window must be leveled or tilted on an outward angle to prevent water from running into the building.

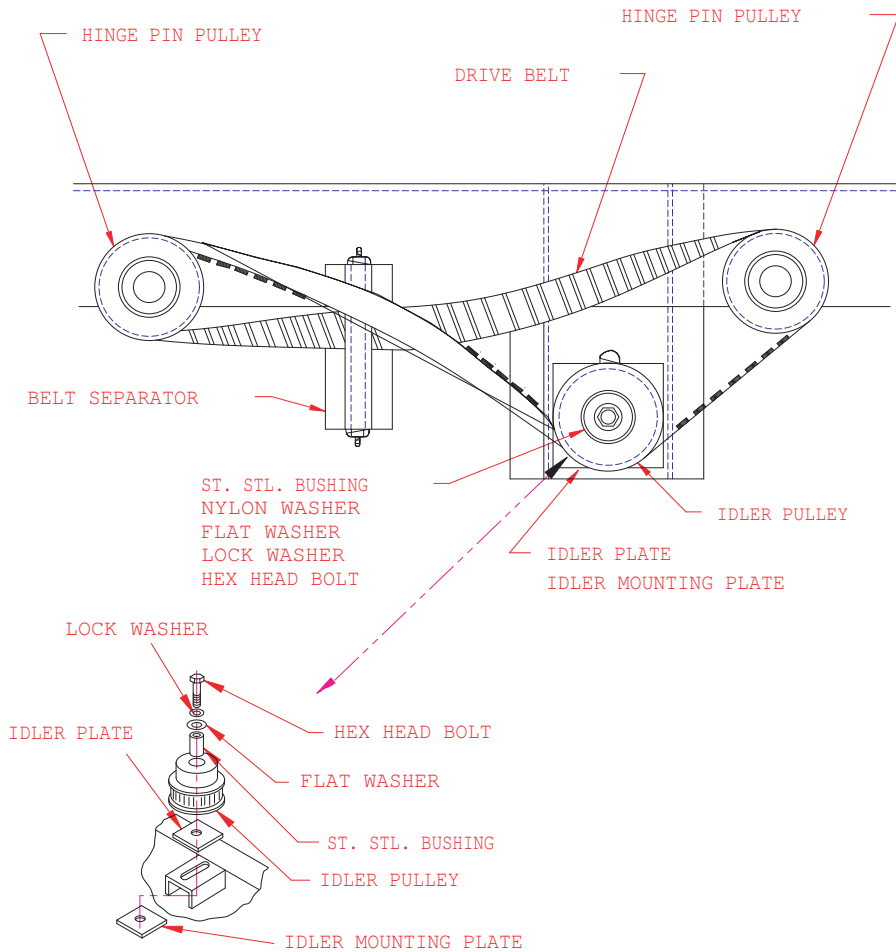
Warning! Two people are required for lifting the window.

Note: There are two wall mounting applications. The mounting space can be surrounded either by side lights (windows) or masonry. In both cases, the upper part of the window above the counter top (window sill) fits flush with the outside wall (see pages 6 & 7). Illustrations will show walls with side lights as this is the most common application.

Note: If mounting the window in a wall with masonry, the window mounts flush with the outside finishing of the building. Drill points are scribed directly onto the masonry. The outside edge of the mullion should be flushed with the outside finishing of the building (see pages 6 & 7).

5. Position window and place inside customer window frame. Counter top should fit flushed with the top of inside finished wall. Use wedge type shingles to wedge or shim the window for plumbing and leveling adjustments.
6. Using the window frame as a template, drill (6) 3/16" (5mm) diameter holes for mounting. From outside, one person holds the window in place,

- with the mounting holes aligned, using shim shingles as required. From inside, the second person installs the plugs and mounting screws.
- When window is fully secured, seal the outside of the window to the building by applying a bead of caulk around the entire window seam where the window meets the wall or window frame.
 - If doors do not open correctly, check alignment of belt. To correct alignment, loosen hex bolt on idler using a Crescent wrench. (see below)



- Slide pulley forward and let belt fall loose. Realign belt on idler pulley as shown above.
- Push pulley to the rear to tighten belt. Make sure the teeth of the belt mesh with the teeth of the pulleys. Tighten hex bolt on pulley using Loctite 242.
- To test operation of doors, close doors. If one door is ajar, loosen set screws on that door's hinge pin pulley. Close doors securely and tighten set screws using Loctite 242. Repeat Step 11 until doors open and close correctly.

Maintenance

Maintenance Schedule

Scheduled maintenance should be performed on a regular basis. This is to assure proper operation and performance of the Flush Mount 3 windows.

DAILY

- Check the sill for foreign materials and/or syrup. (Anything that might cause the window to bind up and not operate smoothly.)

Monthly

- Check the interior of the unit for any build up of any foreign materials using a dry cloth.

NOTE: KEEP ANY LIQUIDS OFF THE INTERIOR COMPONENTS.

- Clean moving parts and lubricate with silicone or Teflon spray.

Semi Annual (6 Months)

- Check the lock bar and door locks. Inspect for missing parts and smooth operations
- Lubricate the locks with silicone.
- Inspect the hinges and bushings for any wear or damage.
- Inspect the weather stripping around the doors for wear or damage.
- Check the setscrews on the locking plate to ensure that they are tight and properly aligned with the locking plate.

YEARLY

- Have a service technician come in and perform a maintenance check on the unit.

IF NEEDED, CONTACT YOUR READY ACCESS SERVICE AGENT FOR SERVICE.



Ready Access, 1815 Arthur Drive, West Chicago, Illinois 60185, Tel: 630-876-7766, Tel: 800-621-5045
Fax: 630-876-7767, Email: ready@ready-access.com, Website: www.ready-access.com
Flushmount 3, 3T and 3X Installation Service Operations Manual 12_01_08