

131 and 131-6

This attractive and economical flushmount window is ideal for a drive-thru or walk up application. Bi-parting doors slide open to the sides. It is available in two standard window heights, 37 3/4" H and 43 3/4" H.

CHOOSE YOUR MODE OF OPERATION

◇ MANUAL OPEN / SELF CLOSE (131SC)

Manually open both doors with one hand. Doors part from the center and easily slide open to the sides. When released, doors close on a gravity fed track. Economical and easy to maintain.

◇ FULLY AUTOMATIC ELECTRIC (131E)

For hands free operation, the operator simply steps into an overhead light beam which opens the door panels automatically. The door panels automatically close when the operator steps away. With the push of a button, operators can easily adjust the width of the window opening from 18"W to 12"W.



SIZE

131—Window Frame Size: 53 1/2"W x 37 3/4"H
Service Opening: 18"W x 31"H adjustable to 12"W x 31"H
Rough Opening: 54"W x 38 1/4"

131-6—Window Frame Size: 53 1/2"W x 43 3/4"H
Service Opening: 18"W x 37"H adjustable to 12"W x 37"H
Rough Opening: 54"W x 44 1/4"H

STANDARD FEATURES:

- ◇ Anodized aluminum extrusions and stainless steel combine to give you an attractive window that will not rust, pit or weather
- ◇ Fully assembled, pre-glazed and ready to install
- ◇ 1/4" Clear Tempered Glass
- ◇ Dark Bronze or Clear Anodized Aluminum
- ◇ Self latches every time it closes. Also includes a thumbturn lock, and night locking bar
- ◇ Track free bottom sill
- ◇ One year parts & labor limited warranty
- ◇ On-staff tech support / stocked parts / nationwide network of service providers

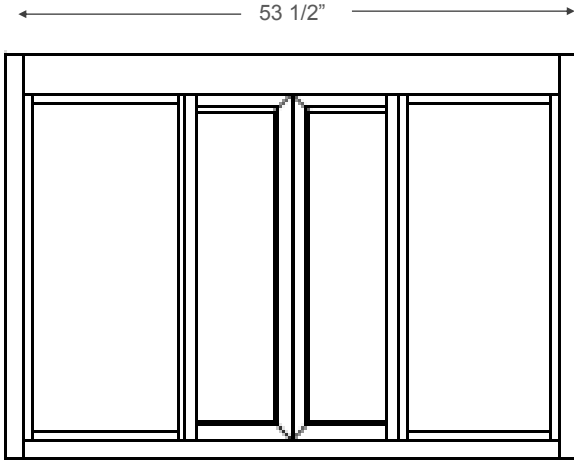
OPTIONAL FEATURES

- ◇ Powder Coat Paint—Tiger Drylac
- ◇ Tinted Glazing
- ◇ 1/4" Hard Coat Low E Glass
- ◇ 5/16 Safety Glass
- ◇ Telescoping Night Time Security Bar Set for additional security
- ◇ Restriction Panel or Screen
- ◇ Matching 53 1/2"W x 10"D shelf for interior or exterior use
- ◇ Hipscan ILO overhead beam box for electric models
- ◇ Transom to house AA100 flyfan
- ◇ Side filler kit if used with AA300 heated air curtain

All windows ship completely pre-assembled, fully glazed and ready to install.

Installation / Owners manual can be retrieved online:

www.ready-access.com



TWO STANDARD WINDOW HEIGHTS

131: 37-3/4" H WITH 18"W x 31"H SERVICE OPENING

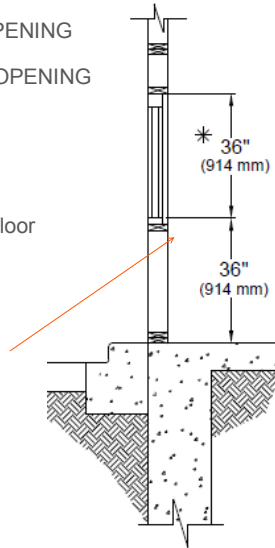
131-6: 43-3/4" H WITH 18"W x 37"H SERVICE OPENING

FRAME DEPTH: 4"

Set rough opening 34 1/4" from interior finished floor for 36" counter height sill.

Local codes prevail.

* When optional hip scan electric option is chosen, power is pulled from bottom of jam (left side from outside view). Note: ensure wires are accessible to interior. Hip scan will mount on interior wall.



- ◇ Installation illustrations are for reference only. Construction conditions and local codes prevail.
- ◇ Must be installed level, square and plumb.
- ◇ Recommend approximately 36" from top of sill to interior finished floor (or per local code).
- ◇ Rough opening 1/2" larger than overall frame size recommended to allow 1/4" space all around for leveling.

ELECTRIC REQUIREMENTS FOR WINDOW

Fully Automatic Electric:

Run power to header on right side (from outside view)*
 Domestic: 115 vac—60Hz with a 15 amp dedicated circuit
 Int'l: 220/240 vac - 60 Hz with an 8 amp dedicated circuit

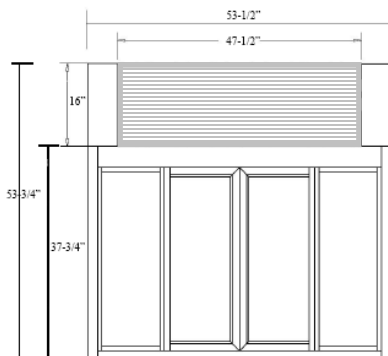
Manual Open / Self Close Window:
 No Power Required

Optional Air Curtain requires separate dedicated circuit

131 WITH AIR CURTAIN (add 6" to height if 131-6 is selected)

COLD CLIMATES

AA300 HEATED
 AIR CURTAIN &
 SIDE FILLER KIT
 ILO TRANSOM



WARM CLIMATES

ATTACHED TRANSOM FOR
 AA100 FLY FAN
 SERVICE OPENING ADJUSTABLE
 FROM 18" to 12" TO MEET
 CA RESTRICTED
 OPENING REQUIREMENTS

