

The popular 275 model is both functional and economical. It features a fixed panel and an operable panel for high visibility. Operating system is located in the header to keep the service area clear. Customizable to different heights/widths.

This versatile window is ideal for many applications including: food service, healthcare, parks and rec, ticket booths, distribution centers, and more.

Choose your mode of operation

◇ MANUAL OPEN / SELF CLOSE

Manual open, with patented hands-free gravity close.
Economical and easy to maintain.

MANUAL OPEN / ELECTRONIC RELEASE (MOER)

- ◇ Electromagnetic “hold open” feature paired with a presence sensor offers the control of manual open with a gravity-fed close that won’t release while interacting with customers. Hands free interaction that is easy to maintain.

ELECTRIC

- ◇ Fully automatic electric, for hands free open & close.
Operator steps into overhead beam to activate.

STANDARD FEATURES:

- ◇ Anodized aluminum extrusions and stainless steel combine to give you an attractive window that will not rust, pit or weather
- ◇ Fully assembled, pre-glazed and ready to install
- ◇ 1/4" Clear Tempered Glass
- ◇ Dark Bronze or Clear Anodized Aluminum
- ◇ Self latches every time it closes. Also includes a thumb turn lock, and night locking bar
- ◇ Track free bottom sill provides for a contaminant free surface. Angled toward outside for drainage toward exterior
- ◇ One year parts & labor limited warranty
- ◇ On-staff tech support / stocked parts / nationwide network of service providers.



Pictured: Left to right from outside view, clear anodized finish

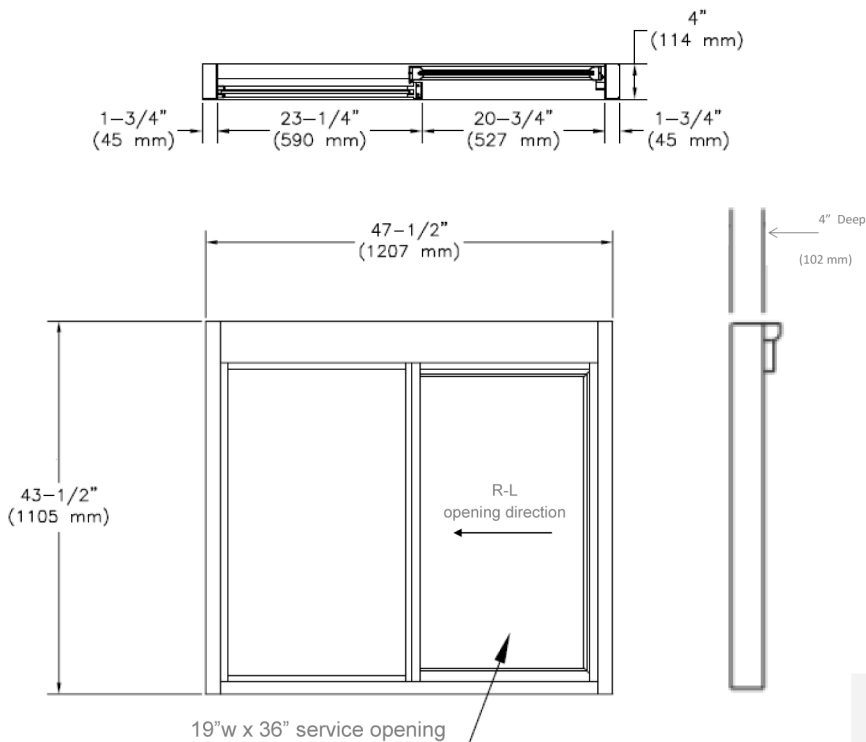
STANDARD SIZES

- ◇ 47 1/2"W x 43 1/2"H (19"W x 35"H service opening)
- ◇ 47 1/2"W x 35 3/4"H (19"W x 27"H service opening)
(15" west coast restricted service opening also available)*
- ◇ 35 3/4"W x 35 3/4"H (13 1/2"W x 27"H service opening)*
(Manual open/ Self Closing and M.O.E.R only)

* Meets CA restricted opening requirement—under 432 square inches

OPTIONAL FEATURES

- ◇ Powder Coat Paint—Tiger Drylac
- ◇ Custom Size
- ◇ Tinted Glazing
- ◇ Low E Glass
- ◇ 5/16 Safety Glass
- ◇ Stainless Steel Shelf to extend sill inside or out (13 ga.)
- ◇ Telescoping Night Time Security Bar Set for additional security
- ◇ Solid Glass Transom
- ◇ Split Transom for AA100 Fly Fan
- ◇ AA300 Heated Air Curtain
- ◇ Restriction Panel or Screen
- ◇ Hipscan presence sensor ILO overhead beam.



All windows are shipped completely pre-assembled, fully glazed and ready to install.

Installation / Owners manual can be retrieved online:

www.ready-access.com

Installation illustrations are for reference only. Construction conditions and local codes prevail.

Must be installed level, square and plumb.

Specify opening direction from outside view
Left to Right or Right to Left

ROUGH OPENING

47 1/2" W x 43 1/2" H

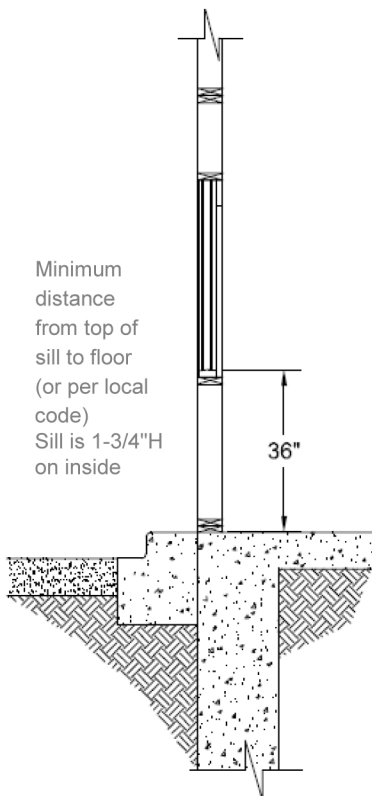
- ◇ Masonry Rough Opening - 48"W (1219 mm) x 44"H (1118 mm)
- ◇ Glazing Rough Opening - 47 3/4"W (1213 mm) x 43 3/4"H (1111 mm)

47 1/2" W x 35 3/4" H

- ◇ Masonry Rough Opening - 48"W (1219 mm) x 36 1/4"H (921mm)
- ◇ Glazing Rough Opening - 47 3/4" W (1213 mm) x 36"H (914 mm)

35 3/4" W x 35 3/4" H

- ◇ Masonry Rough Opening - 36 1/4"W (921mm) x 36 1/4"H (921mm)
- ◇ Glazing Rough Opening - 36"H (914 mm) x 36"H (914 mm)



ELECTRIC REQUIREMENTS

Run power to header on fixed panel side

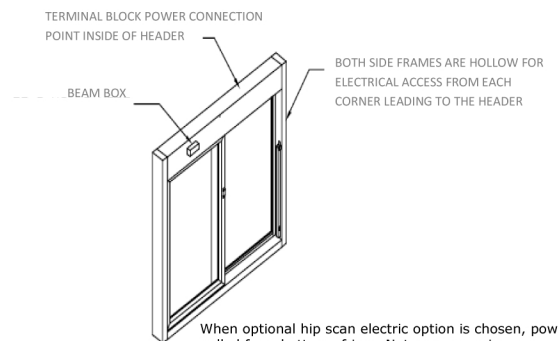
Manual Open / Self Close Window:

No Power Required

Manual Open / Electronic Release & Fully Automatic Electric:

115 vac—60Hz with a 15 amp dedicated circuit

Window must be on a dedicated circuit



When optional hip scan electric option is chosen, power is pulled from bottom of jam. Note: ensure wires are accessible to interior. Hip scan will mount on interior wall.