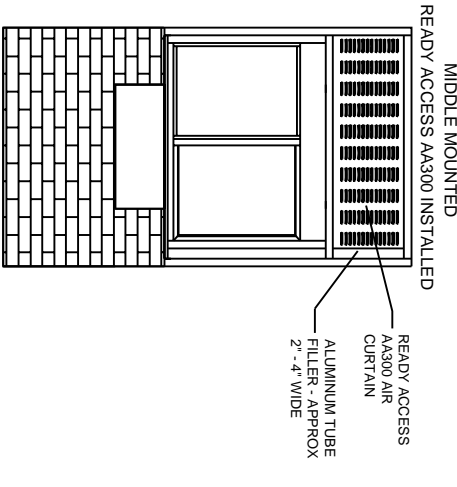
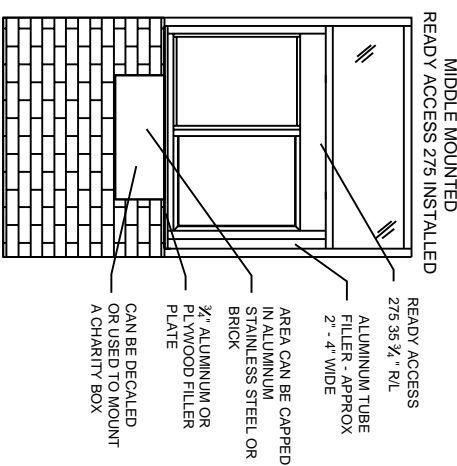
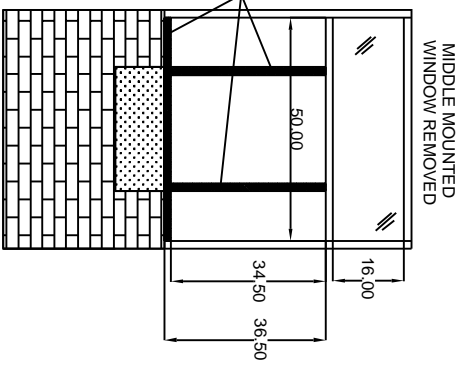
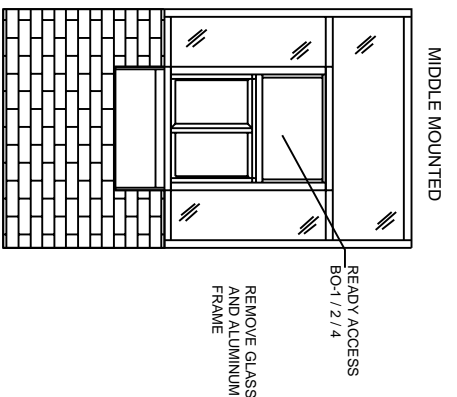


ALL DIMENSIONS ARE APPROXIMATE. DOUBLE CHECK FIELD DIMENSIONS.



ALL DIMENSIONS ARE APPROXIMATE. DOUBLE CHECK FIELD DIMENSIONS.

WORK TO DIMENSIONS-DO NOT SCALE
TOL. UNLESS SPECIFIED
XXXX TOL. NOT REQ'D
TOL. CLASS ± .030
ANGULAR TOL. ± 1°

USED IN PRODUCTS:
BO-2 - 275 - 600
REVISION: OR
REVISION DATE: 1/16/2007

DESIGN BY: HSC
DATE: 1/16/2007
DRAWN BY: SC
DATE: 1/16/2007

MATERIAL: Mechanical
MATERIAL SPEC:
GAUGE:

1815 Ardmore Drive - West Chicago, IL • 800-621-5045 • 630-876-7766 • Fax 630-876-7767
READY ACCESS

LATEST REVISION NOTE:

DESCRIPTION: COMMON RETRO INSTALL
PART. NO.: RETRO - INSTALL

DESCRIPTION: COMMON RETRO INSTALL
PART. NO.: RETRO - INSTALL